

# AGENDA

- Brazilian Challenges
- Beraca





# BRAZILIAN CHALLENGES

 BERACA



# BRAZILIAN CHALLENGES



HOW  
CAN WE  
BRING IT ALL  
TOGETHER

A graphic illustration featuring a large orange sun on the left with a blue wind turbine in front of it. To the right is a green globe with a blue grid pattern and a green recycling symbol. The text 'HOW CAN WE BRING IT ALL TOGETHER' is overlaid on these elements. The word 'HOW' is in black, 'CAN WE' is in purple, 'BRING IT ALL' is in black, and 'TOGETHER' is in yellow.



 BERACA





**The basic set of rules on ABS in Brazil is a temporary measure of 2001** (Measure Provisional 2186-16). This interim measure was complemented by decrees, including the definition of the role of the National Council of Genetic Resources (CGEN). **In turn, CGEN has issued several resolutions, decisions and procedural guidance.**





**The basic set of rules on ABS in Brazil is a temporary measure of 2001** (Measure Provisional 2186-16). This interim measure was complemented by decrees, including the definition of the role of the National Council of Genetic Resources (CGEN). **In turn, CGEN has issued several resolutions, decisions and procedural guidance.**



In order to authorize the access or transfer of samples, CGEN or any other accredited organ to authorize, **has to request information about the institutions and the research project involved as well as evidence of prior consent of the owner of the area where the genetic resources will be collected.**



**The requirements on the previous permission are different if there is a potential for commercial use and / or there is a local or indigenous community involved.** When access activities include bioprospecting or technological activities, CGEN also must approve a contract for the use of genetic resources (CURB).

 BERACA



 BERACA



# BERACA

 BERACA



WT



FI




AN&H



HPC

- 6 States
- 50 Cooperatives
- 160 Communities
- 2.500 Families
- 7.500 People

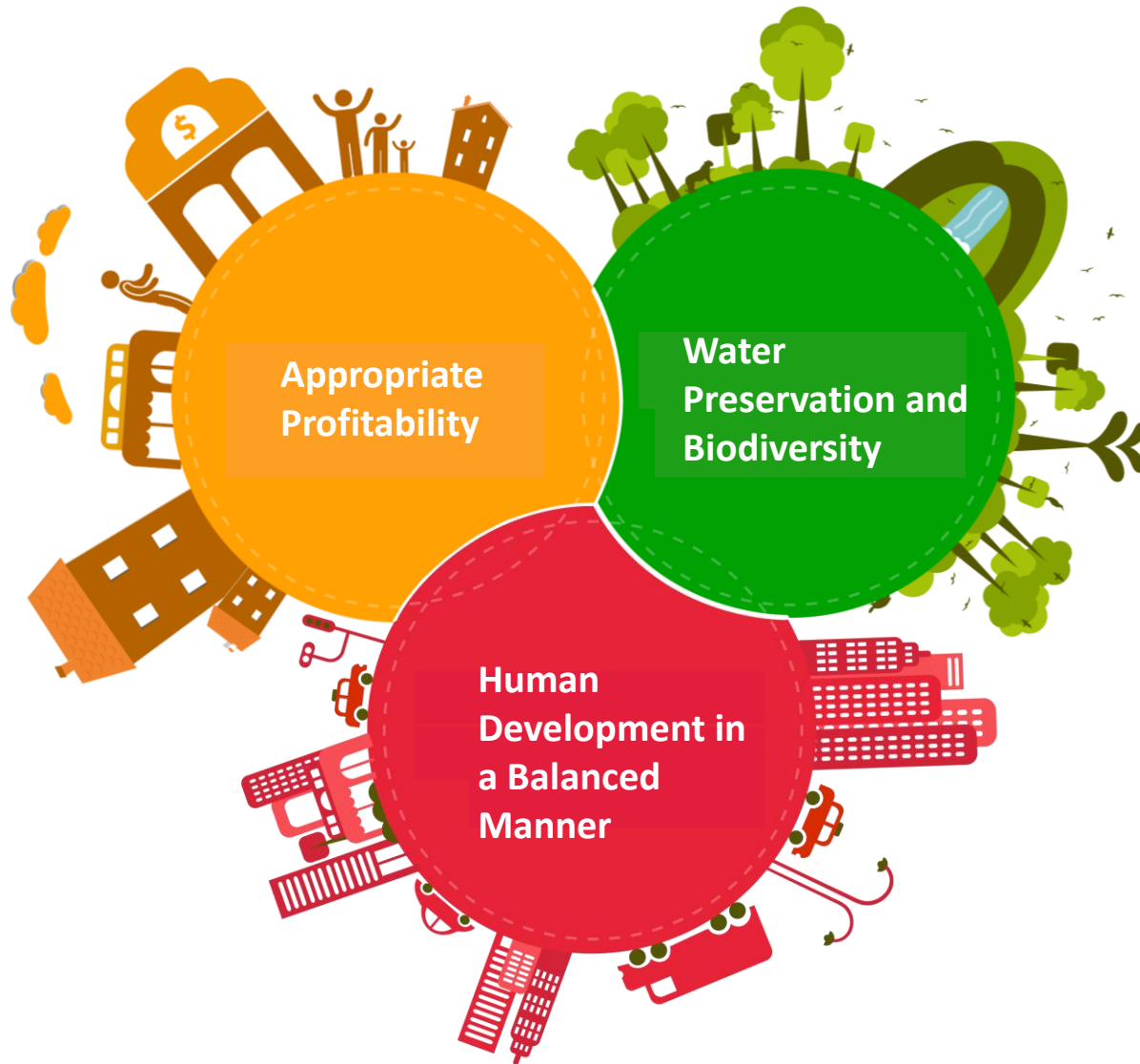
A large blue circle with a slight gradient and shadow, containing the text 'Sociobiodiversity Enhancement Program®' in white.

**Sociobiodiversity  
Enhancement  
Program®**

# BERACA

BERACA







# BERACA

 BERACA



# BERACA

 BERACA



Fondation  
L'OCCITANE

BERACA

BERACA



*Kiehl's*  
SINCE 1851

COMMUNITY OF  
NAZAREZINHO (PA)



USERS



PROVIDERS

**NAGOYA PROTOCOL**



# QUESTIONS?

 BERACA



# CONTACTS

 BERACA



[www.beraca.com.br](http://www.beraca.com.br)

[thiago.terada@beraca.com.br](mailto:thiago.terada@beraca.com.br)